



1998 **BEECHCRAFT KING AIR 350**







### AVIONICS

- **PACKAGE:** Garmin G1000NXi
- **CVR:** L3Harris Digital CVR
- **FMS:** Universal UNS-1E FMS
- **AUTOPILOT:** Collins APC Autopilot Computer
- **RADAR:** Garmin Weather Radar Unit
- **RAD ALT:** Garmin
- **VHF COMMS:** Garmin G1000 Nxi Integrated
- **NAVS:** Garmin G1000 Nxi Integrated
- **ADF:** Garmin G1000 Nxi Integrated ADF
- **DME:** Garmin G1000 Nxi Integrated DME
- **ADC:** Garmin
- **GPS:** Garmin G1000 Nxi Integrated
- **TCAS:** Garmin G1000 Nxi Integrated
- **XPNDR:** Garmin Transponder w/ Altitude Encoder via GEA-12



### ADDITIONAL FEATURES/STCs

- Allied Signal Flitefone
- Blackhawk PWC -67A Engine Upgrade
- Raisbeck Nacelle Wing Locker System
- Raisbeck Dual Aft Body Strakes
- Blackhawk MT 5-Blade Prop
- Aviation Fabricators PAX Window Shades
- Elliott Aviation Prizm Cabin Lighting System
- Rose-Wood Aircraft Services Cabin Headliner Mod
- Aviation Fabricators Drink Rail and Table Install Kit
- Garmin GTX-345R ADS-B
- ARTEX ME406 ELT Installation
- Peregrine GPS Antenna Installation



*\*Specification is Preliminary and Subject to Changes.*

*\*All information is subject to verification*



### MAINTENANCE

INSPECTION	COMPLIED WITH	NEXT DUE
PHASE 1-4	September 2023	September 2025
PHASE 5 & 8	September 2023	September 2024
PHASE 6	September 2023	September 2025
PHASE 9	7,118.3 Hours	8,318.3 Hours
PHASE 10	4,559 Cycles	5,549 Cycles
PHASE 11	September 2022	March 2025
PHASE 13	4,225 Cycles	6,745 Cycles
PHASE 14	March 2023	March 2026
PHASE 17	5,942.8 Hours	10,000 Hours
PHASE 20	March 2023	March 2029
PHASE 25	September 2023	September 2027
MAIN LANDING GEAR OVERHAUL	March 2023	-

*\*Specification is Preliminary and Subject to Changes.*

*\*All information is subject to verification*





### INTERIOR

#### **Configuration / PAX:**

Eight (8) Passenger Executive Cabin Seating + (1) Belted Lav  
Nine (9) Pax Total

#### **Seating:**

Forward Four (4)-Place Club w/ Dual Fold-Out Tables  
Aft Four (4) Place Club w/ Dual Fold-Out Tables

#### **Refreshment Center:**

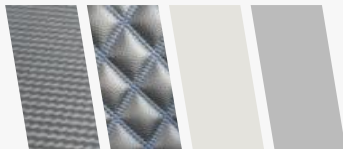
Forward Left-Hand

#### **Lavatory:**

Aft Right-Hand Side-Facing Lavatory w/ Belt

#### **Condition:**

New May 2022 by Rose-Wood Completions



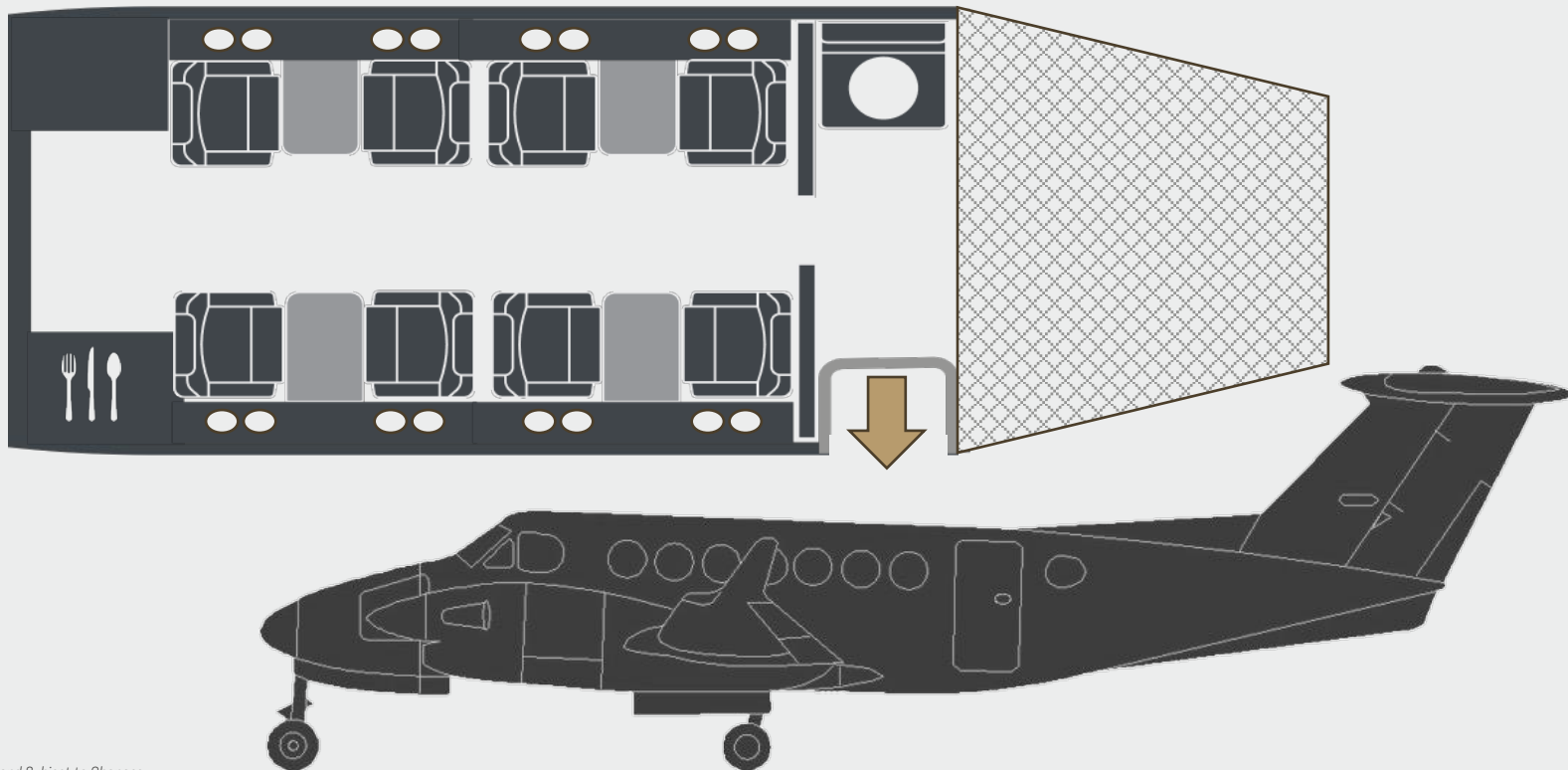
*Displayed color swatches are an approximation*

*\*Specification is Preliminary and Subject to Changes.*





### LAYOUT



*\*Specification is Preliminary and Subject to Changes.*



# AIRCRAFT DETAILS

1998 BEECHCRAFT KING AIR 350



## EXTERIOR

### Base Paint:

Split Base Matterhorn White & Virga Blue

### Accent Colors:

Acryglo Blue Fantasy & Acryglo Titanium Metallic

### Condition:

New May 2022 by Rose-Wood Completions



*Displayed color swatches are an approximation*

*\*Specification is Preliminary and Subject to Changes.*

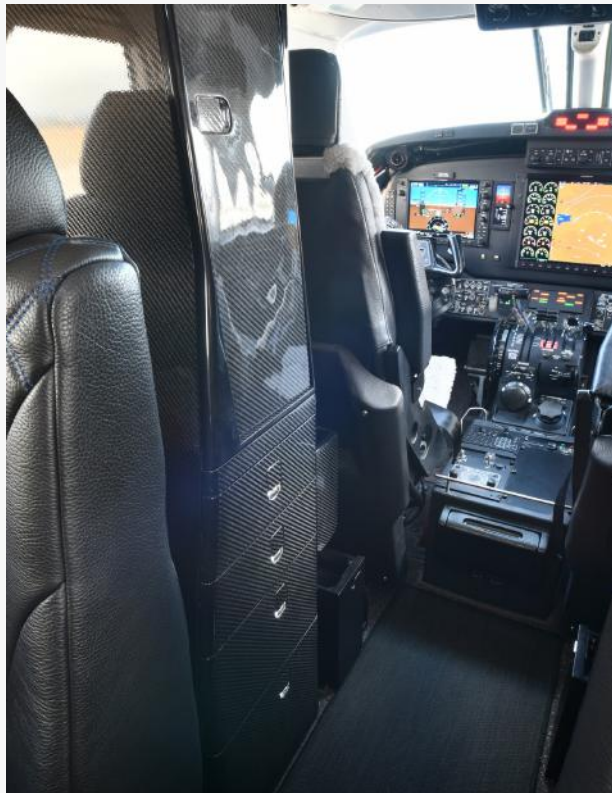
*\*All information is subject to verification*



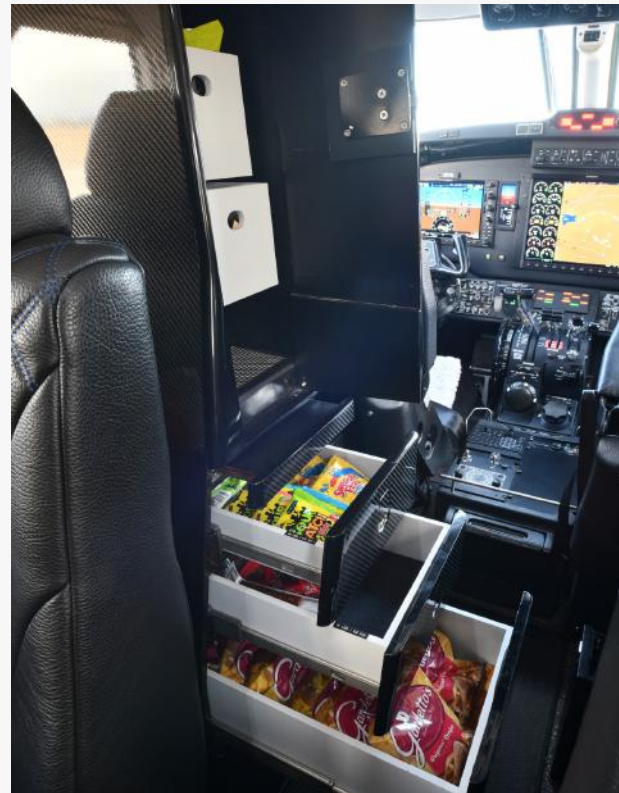




Pilot 4-Point Seatbelt



LH Refreshment Center



LH Refreshment Center Storage



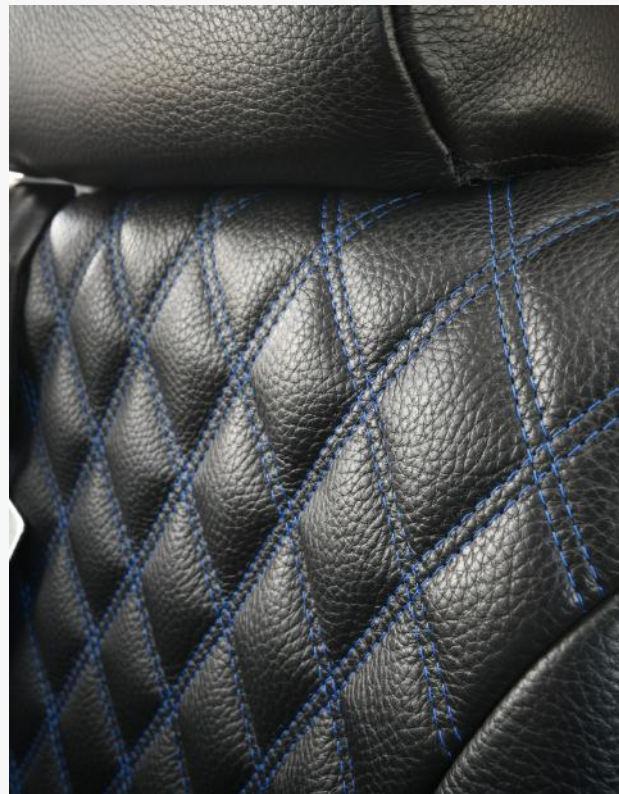
Forward Four (4)-Place Club Looking Aft



Aft Four (4)-Place Club Looking Aft



RH Aft Club Seating



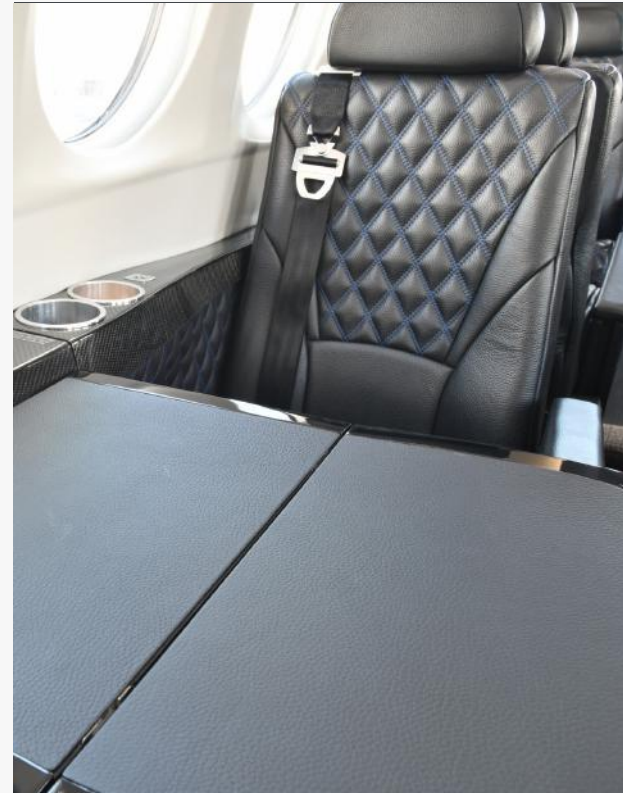
Diamond Stitching Detail



Aft Belted Lav



Carbon Fiber Drink Rail



Fold-Out Executive Table Leather Detail



Aft Four (4)-Place Club Looking Forward



Forward Four (4)-Place Club Looking Forward



# EXTERIOR

1998 BEECHCRAFT KING AIR 350





# EXTERIOR

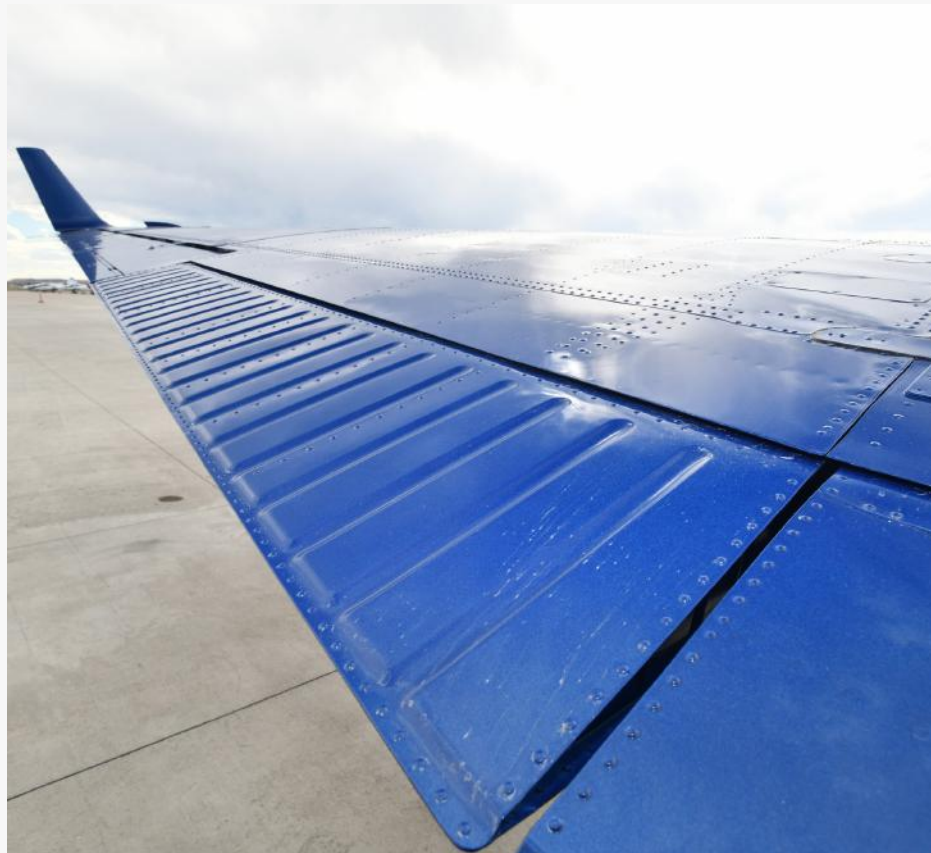
1998 BEECHCRAFT KING AIR 350





# EXTERIOR

1998 BEECHCRAFT KING AIR 350







# EXTERIOR

1998 BEECHCRAFT KING AIR 350





# EXTERIOR

1998 BEECHCRAFT KING AIR 350





# EXTERIOR

1998 BEECHCRAFT KING AIR 350





# EXTERIOR

1998 BEECHCRAFT KING AIR 350





# YOUR HEADQUARTERS



COEUR D'ALENE, ID  
WICHITA, KS  
OKLAHOMA CITY, OK  
SCOTTSDALE, AZ  
DALLAS, TX  
MEXICO CITY, MEXICO  
KANSAS CITY, MO  
HOLMDEL, NJ  
SAVANNAH, GA  
TAMPA, FL

BOGOTA, COLOMBIA  
BELO HORIZONTE, BRAZIL

ZURICH, SWITZERLAND  
MILAN, ITALY  
ANKARA, TURKEY

DUBAI, UNITED ARAB EMIRATES  
NEW DELHI, INDIA

KUALA LUMPUR, MALAYSIA

## UNITED STATES HEADQUARTERS

+1.858.397.9773  
1001 NW Lou Holland Dr.  
Suite 230  
Kansas City, MO 64116

## INTERNATIONAL HEADQUARTERS

+971.4.422.0514  
Fortune Executive Tower  
Unit 502  
Cluster T, JLT Dubai UAE



# YOUR HEADQUARTERS

## FOR GLOBAL **AIRCRAFT SALES**

JETHQ was founded on the belief that the most valuable asset in aviation is trust. We strive to not simply acquire and sell aircraft for our clients but build lasting relationships.

Our team brings decades of aviation experience and real-time industry insight and analysis to each complex transaction.

Whether you are buying or selling an aircraft, be confident that JetHQ will be a dedicated partner looking out for your interests, every step of the way.

Let's start.

Founder / Managing Director